

**CITY OF AMESBURY**

# Amesbury School Support & Empowerment Team

---

Elizabeth McAndrews, Superintendent  
Caitlin Thayer, Communications Director  
Acting Chief Craig Bailey, Amesbury PD  
Tiffany Nigro, Director, Pettengill House



# BACKGROUND & PURPOSE



**Enhance communication  
to support students**



**Improve well-being  
of students/families**



**Improve sense of community  
and connectedness**



**AMESBURY  
POLICE**



**AMESBURY  
FIRE RESCUE**

# ASSET Members



**Elizabeth McAndrews**  
Superintendent



**Kassandra Gove**  
Mayor



**Craig Bailey**  
Acting Police Chief



**Ken Berkenbush**  
Fire Chief



**Tiffany Nigro**  
Pettengill House Director



**Caitlin Thayer**  
Communications Director



**Kevin Donovan**  
Acting Deputy Chief



**Dave Mather**  
Assistant Fire Chief



**Lisa Prendergast**  
Pettengill House  
Director of Case Management



# 1 WHAT ASSET DOES





# ONGOING ACTIVITIES & PROJECTS

- Monthly Meetings since June 2021
- Regular communication between meetings regarding issues that arise
- Typical agenda items:
  - Planning for school drills
  - Data and statistics
  - Debrief issues
  - Plan for systemic change
- New initiatives:
  - i love u guys
  - InForce
  - Youth at Risk presentation
  - School Crisis Response Plan





# i love u guys



- **Standard Response Protocol**
  - Responses cover a wide range of incidents from needing to Secure students and staff in their rooms for a medical emergency, to a more drastic event requiring evacuation.
  - Has been introduced to staff, will be scheduling practice drills for each scenario



LOCKOUT



LOCKDOWN



EVACUATE



SHELTER



HOLD



# IN FORCE911



**The nation's most advanced school safety software!**

**Communication during a significant threat has always been a concern**

- In FORCE911 allows staff to notify Police of an event.
  - Notification goes from minutes to seconds
  - During the event, staff members can communicate relevant information as to the location and actions of the threat
  - Includes BeSafe for floorplans



# YOUTH AT RISK PRESENTATION

**Given the uniqueness of ASSET, we will present and share our model program.**

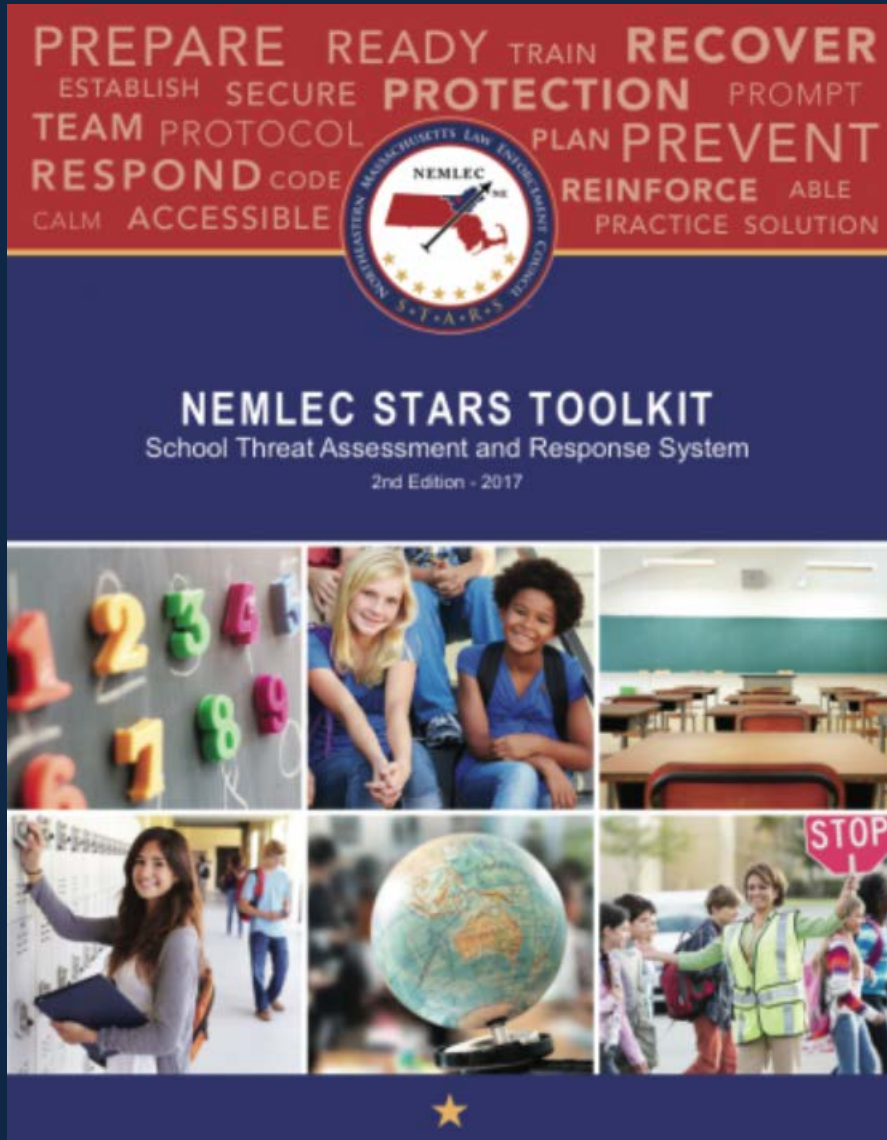
**THE conference for professionals who work with at-risk youth, including school counselors, social workers, licensed medical health providers, etc.**

**Session is already full!**





# SCHOOL CRISIS RESPONSE PLAN



Successfully create and implement new crisis response protocols for the Amesbury Public Schools district by 2024, and ensure proper communication and training takes place for staff, faculty, students, parents/guardians and the community.



# SCHOOL CRISIS RESPONSE PLAN

1

Research existing plans and create framework

2

Create and finalize crisis response plan

3

Make plans and information accessible

4

Marketing and training

5

Follow up and revise

# SCHOOL CRISIS RESPONSE PLAN

APS Crisis Response Project Plan						
Task / Milestone	Progress	Start Date	Due Date	Assigned To	<input type="checkbox"/>	Notes
<b>Phase 1</b>						
<b>Research Existing Plans and Create Framework</b>						
Assess what we already have in place	Complete	2/17/2022	3/17/2022	APS / APD / AFD / Pettengill		<a href="#">Add existing documents to the project folder</a>
Define which incidents require protocols for response	Complete	2/17/2022	3/17/2022	APS / APD / AFD / Pettengill		<a href="#">Add types of incidents to our tracking sheet</a>
Get other school district plans full documentation to review	Complete	2/17/2022	3/17/2022	Elizabeth		
Get other PD crisis protocols to review	Complete	2/17/2022	3/17/2022	Craig		
Ask other mental health organizations for plans to review	Complete	2/17/2022	3/17/2022	Pettengill		
All to review the plans included in the document folder	Complete	3/17/2022	4/28/2022	Project Team		<a href="#">View the document folder</a>
Create written framework for documents and protocols needed	Complete	3/17/2022	4/14/2022	Caitlin		<a href="#">Use Flip Chart as basis</a>
Approve framework	Complete	4/14/2022	4/28/2022	Project Team		

RACI CHART	Superintendent	Mayor	Police Chief	Fire Chief	Pettengill	Comms Director	School Committee	Principals
<b>Phase 1</b>								
<b>Research Existing Plans and Create Framework</b>								
Assess what we already have in place	R		R	R	R	A		
Define which incident require protocols for response	R	I	R	R	R	A		C
Get other school district plans full documentation to review	R					A		
Get other PD crisis protocols to review			R			A		
Ask other mental health organizations for plans to review					R	A		
All to review plans included in document folder	R		R	R	R	A		
Create written framework for documents and protocols needed	A					R		
Approve framework	R	R	R	R	R	A	I	I

**R - Responsible**

**A - Accountable**

**C - Consulted**

**I - Informed**



# SCHOOL CRISIS RESPONSE PLAN

## ➤ Active Shooter

### INTRODUCTION

Lorem ipsum dolor sit amet, consectetur adipiscing elit, sed do eiusmod tempor incididunt ut labore et dolore magna aliqua. Ut enim ad minim veniam, quis nostrud exercitation ullamco laboris nisi ut aliquip ex ea commodo consequat. Duis aute irure dolor in reprehenderit in voluptate velit esse cillum dolore eu fugiat nulla pariatur. Excepteur sint occaecat cupidatat non proident, sunt in culpa qui officia deserunt mollit anim id est laborum.

### QUICK OVERVIEW

#### HOLD

Lorem ipsum dolor sit amet, consectetur adipiscing elit, sed do eiusmod tempor incididunt ut labore et dolore magna aliqua.

#### SECURE

Lorem ipsum dolor sit amet, consectetur adipiscing elit, sed do eiusmod tempor incididunt ut labore et dolore magna aliqua.

#### LOCKDOWN

Lorem ipsum dolor sit amet, consectetur adipiscing elit, sed do eiusmod tempor incididunt ut labore et dolore magna aliqua.

#### EVACUATE

Lorem ipsum dolor sit amet, consectetur adipiscing elit, sed do eiusmod tempor incididunt ut labore et dolore magna aliqua.

#### SHELTER

Lorem ipsum dolor sit amet, consectetur adipiscing elit, sed do eiusmod tempor incididunt ut labore et dolore magna aliqua.

- Includes:
  - Resources, response and recovery
  - i love u guys language
  - InForce
- Taking into consideration how incidents could impact buildings differently, and how incidents can impact other buildings in the vicinity



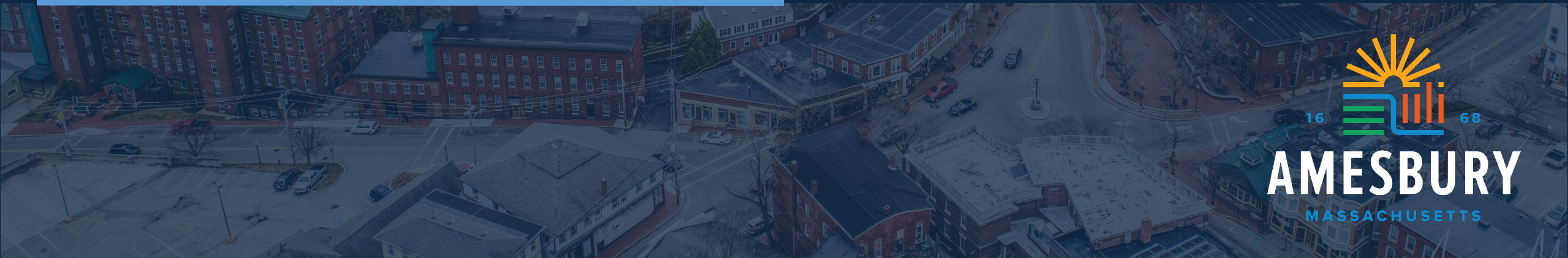


# NEXT STEPS

- This Friday's Superintendent newsletter will include an introduction to these topics
  - Ongoing communication will be provided to the school community about trainings, updates, and educational info
- Training and drills for staff and building stakeholders are being scheduled in collaboration with APD
- Beginning to draft response protocols for one incident to set the standard for what the crisis response plan document will look like



# THANK YOU!



**AMESBURY**  
MASSACHUSETTS